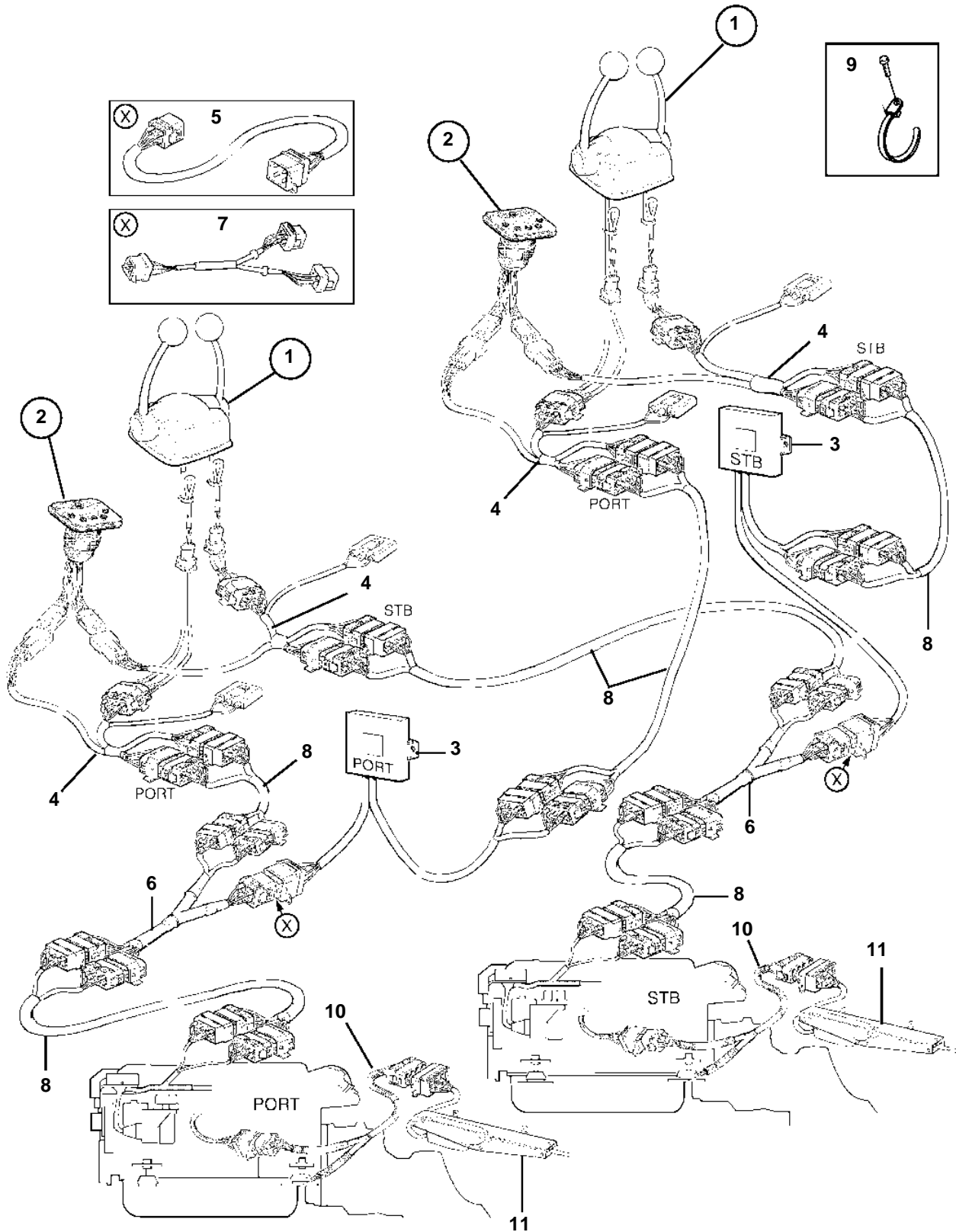


KAMD44P-B, KAD44P-B, KAMD44P-C, KAD44P-C KAMD300-A, KAD300-A



KAMD44P-B, KAD44P-B, KAMD44P-C, KAD44P-C KAMD300-A, KAD300-A

REF	PART NO.	QTY	DESCRIPTION	SEE SEC.	NOTES
1		X	Control		
				4995	
2		X	Control panel		
				4372	
3	874125	X	Electronic unit		For two or more stations.
4	874148	X	Cable kit		2ea for each steering positions.
5	874051	X	Extension cable'verl		L=3,0m. 4-pole.
	874052	X	Extension cable'verl		L=5,0m. 4-pole.
	874053	X	Extension cable'verl		L=7,0m. 4-pole.
	874054	X	Extension cable'verl		L=9,0m. 4-pole.
	874055	X	Extension cable'verl		L=11,0m. 4-pole.
6	873921	2	Wiring harness		For two or more stations.
7	873936	2	Branch cable		For three steering positions.
8	873916	X	Extension cable		L=3,0m. 2x8-pole
	873917	X	Extension cable		L=5,0m. 2x8-pole
	873918	X	Extension cable		L=7,0m. 2x8-pole
	873919	X	Extension cable		L=9,0m. 2x8-pole
	873920	X	Extension cable		L=11,0m. 2x8-pole
9	949666	X	Strip clamp		
10		2	Cable kit	3455	FOR I/O
11		2	Actuator	3455	FOR I/O